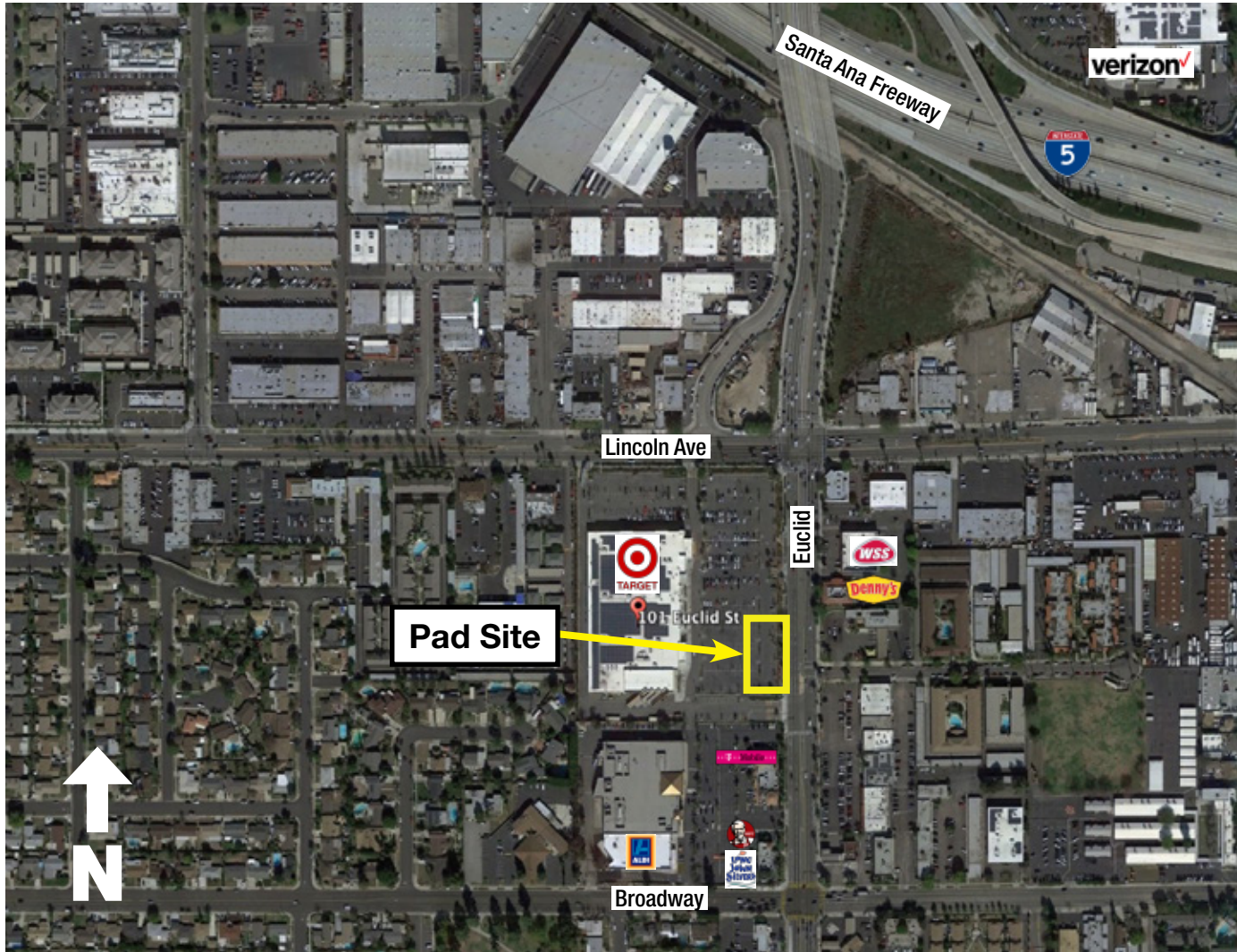


# QSR Pad Site For Lease – Drive Thru Available

TARGET ANCHORED | FOR GROUND LEASE OR BTS

101 Euclid St. | Anaheim, CA 92802



## Site Information

### PROJECT SUMMARY

|                |                 |
|----------------|-----------------|
| Size of site   | + 0.85 acre lot |
| Building area  | Up to +5,500 sf |
| Parking Spaces | 50 Stalls       |

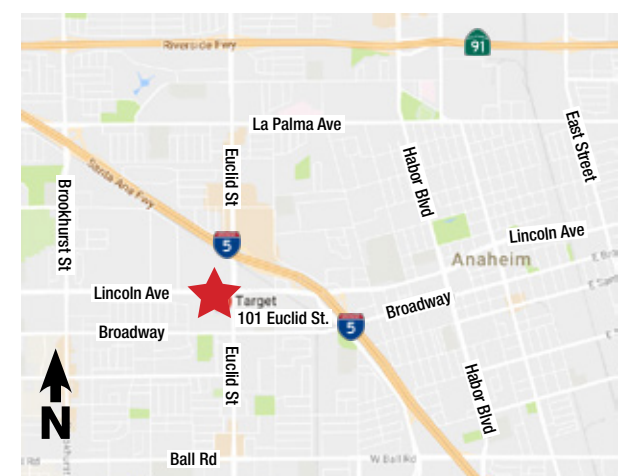
### TRAFFIC COUNTS

|             |              |
|-------------|--------------|
| S Euclid St | ± 32,800 CPD |
| Lincoln Ave | + 25,900 CPD |

## Demographics

|                 | Radius | 1 Mile   | 2 Mile   | 3 Mile   |
|-----------------|--------|----------|----------|----------|
| 2016 Population |        | 41,954   | 149,801  | 299,697  |
| 2016 Households |        | 11,797   | 41,692   | 82,011   |
| HH INCOME       |        |          |          |          |
| 2016 Average    |        | \$68,532 | \$67,433 | \$69,522 |
| 2016 Med        |        | \$52,185 | \$52,551 | \$54,722 |

## Regional Map



Project Developer

[www.CalBayCorp.com](http://www.CalBayCorp.com)  
Manhattan Beach, CA

**RYAN SHEA**

(310) 545-8350 – Office  
(310) 963-6614 – Cell  
[Ryan@CalBayCorp.com](mailto:Ryan@CalBayCorp.com)

**PERRY MANN**

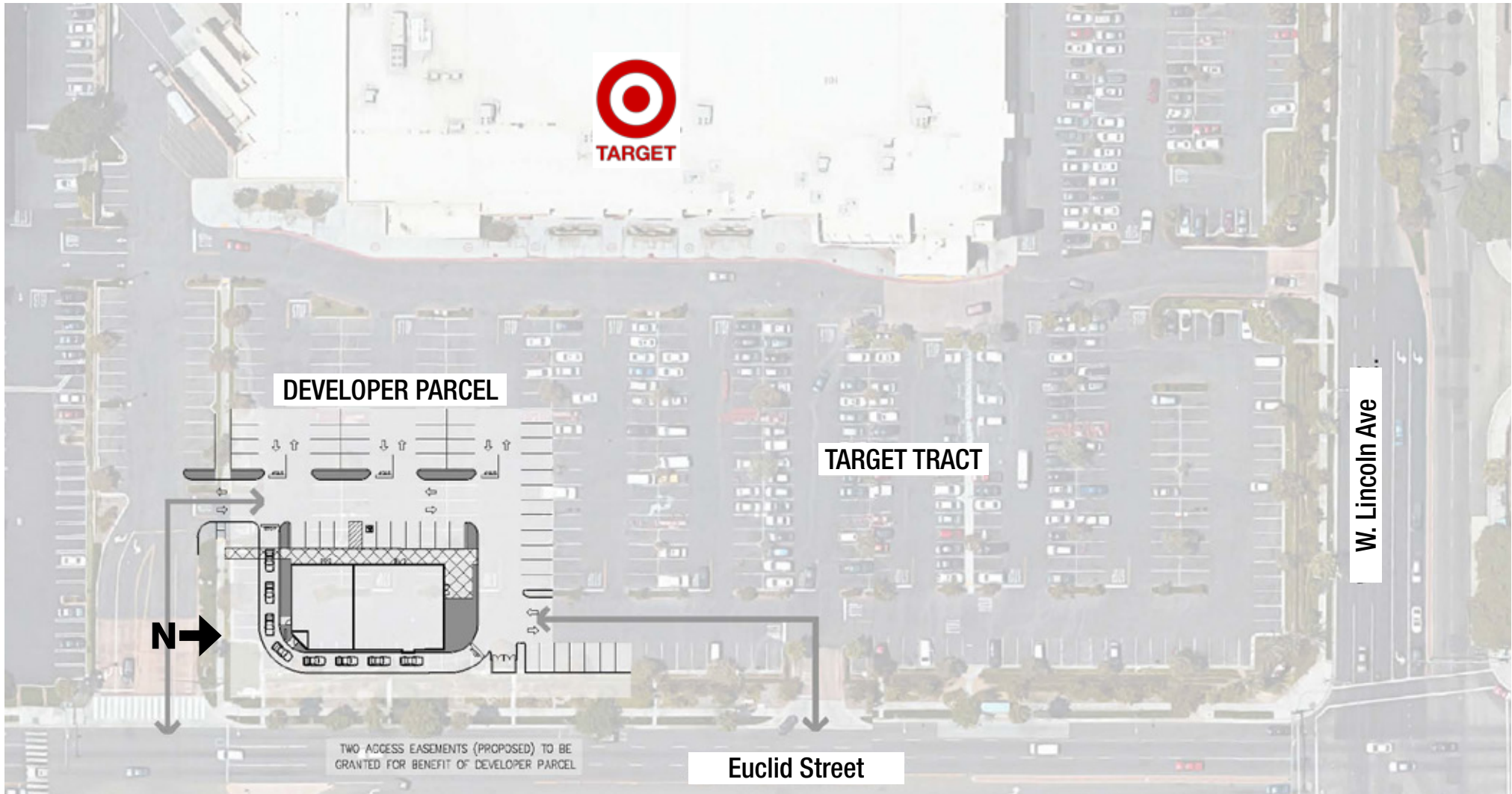
(310) 545-8350 – Office  
(480) 229-4411 – Cell  
[Perry@CalBayCorp.com](mailto:Perry@CalBayCorp.com)



# QSR Pad Site For Lease – Drive Thru Available

TARGET ANCHORED | FOR GROUND LEASE OR BTS

101 Euclid St. | Anaheim, CA 92802



Project Developer

[www.CalBayCorp.com](http://www.CalBayCorp.com)  
Manhattan Beach, CA

**RYAN SHEA**

(310) 545-8350 – Office  
(310) 963-6614 – Cell  
[Ryan@CalBayCorp.com](mailto:Ryan@CalBayCorp.com)

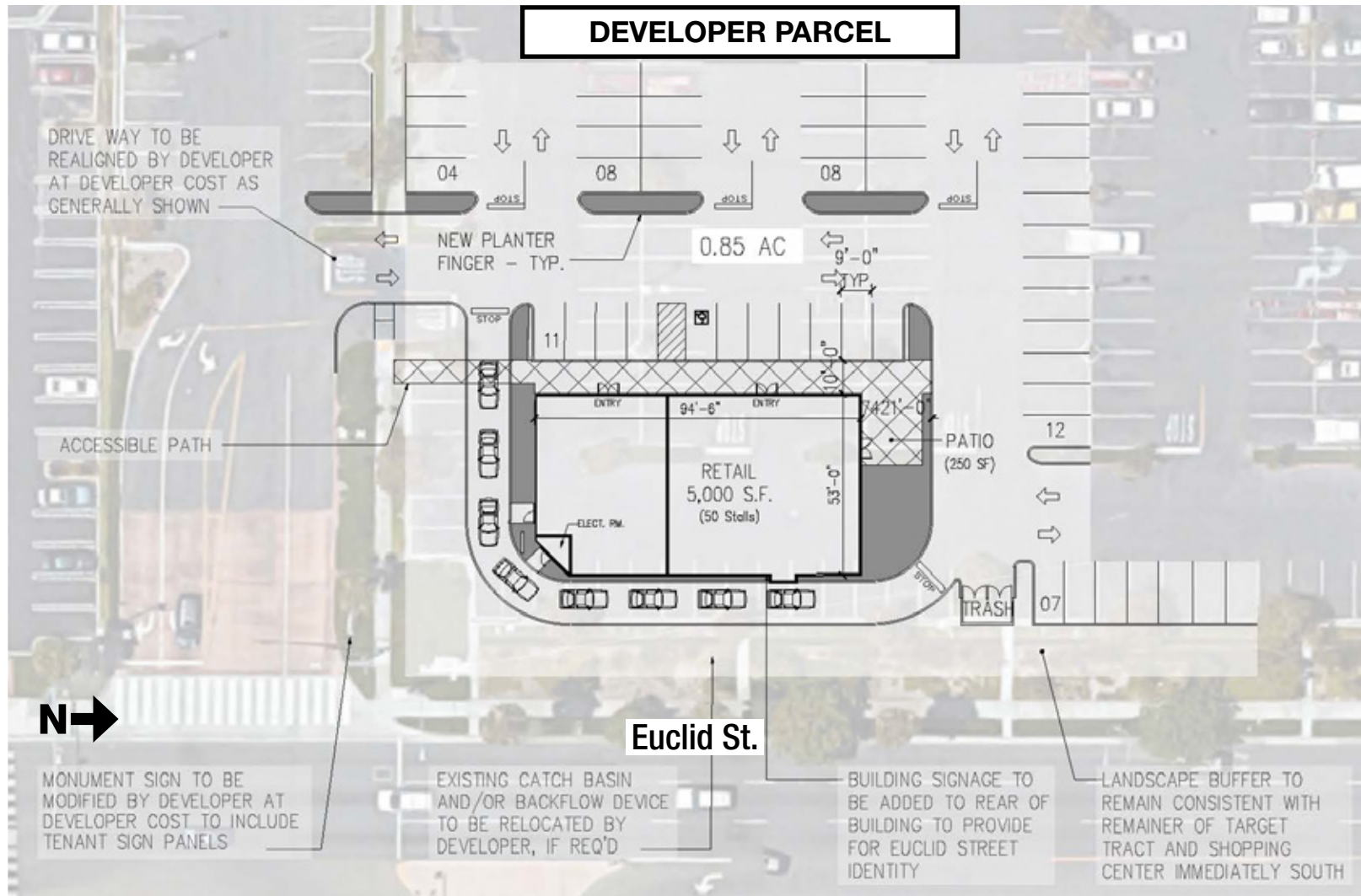
**PERRY MANN**

(310) 545-8350 – Office  
(480) 229-4411 – Cell  
[Perry@CalBayCorp.com](mailto:Perry@CalBayCorp.com)

# QSR Pad Site For Lease – Drive Thru Available

TARGET ANCHORED | FOR GROUND LEASE OR BTS

101 Euclid St. | Anaheim, CA 92802



Project Developer

[www.CalBayCorp.com](http://www.CalBayCorp.com)  
Manhattan Beach, CA

**RYAN SHEA**

(310) 545-8350 – Office  
(310) 963-6614 – Cell  
[Ryan@CalBayCorp.com](mailto:Ryan@CalBayCorp.com)

**PERRY MANN**

(310) 545-8350 – Office  
(480) 229-4411 – Cell  
[Perry@CalBayCorp.com](mailto:Perry@CalBayCorp.com)