

# Ontario Mills Site Available REDEVELOPMENT | FOR LEASE

4551 E Mills Circle, Ontario, CA 91764



## Site Information

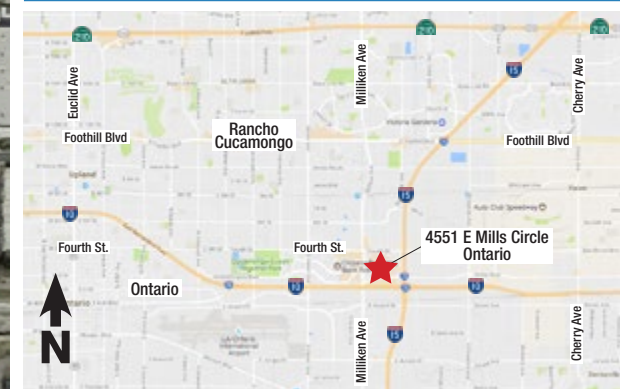
### PROJECT SUMMARY

Size of Site	± 1.9 acres
Building Size	±8,000 sf
Parking Stalls	±128 spaces
<b>TRAFFIC COUNTS</b>	
Fourth Street	± 30,500 ADT

## Demographics

Radius	1 Mile	2 Mile	3 Mile
2016 Population	3,921	12,202	58,670
2016 Households	1,753	4,057	20,076
<b>HH INCOME</b>			
2016 Average	\$60,352	\$65,125	\$77,477
2016 Med	\$55,294	\$56,053	\$63,326

## Regional Map



## Project Developer

www.CalBayCorp.com  
Manhattan Beach, CA

## RYAN SHEA

(310) 545-8350 – Office  
(310) 963-6614 – Cell  
Ryan@CalBayCorp.com

## PERRY MANN

(310) 545-8350 – Office  
(480) 229-4411 – Cell  
Perry@CalBayCorp.com



# Ontario Mills Site Available REDEVELOPMENT | FOR LEASE

4551 E Mills Circle, Ontario, CA 91764



Project Developer

[www.CalBayCorp.com](http://www.CalBayCorp.com)  
Manhattan Beach, CA

**RYAN SHEA**

(310) 545-8350 – Office  
(310) 963-6614 – Cell  
[Ryan@CalBayCorp.com](mailto:Ryan@CalBayCorp.com)

**PERRY MANN**

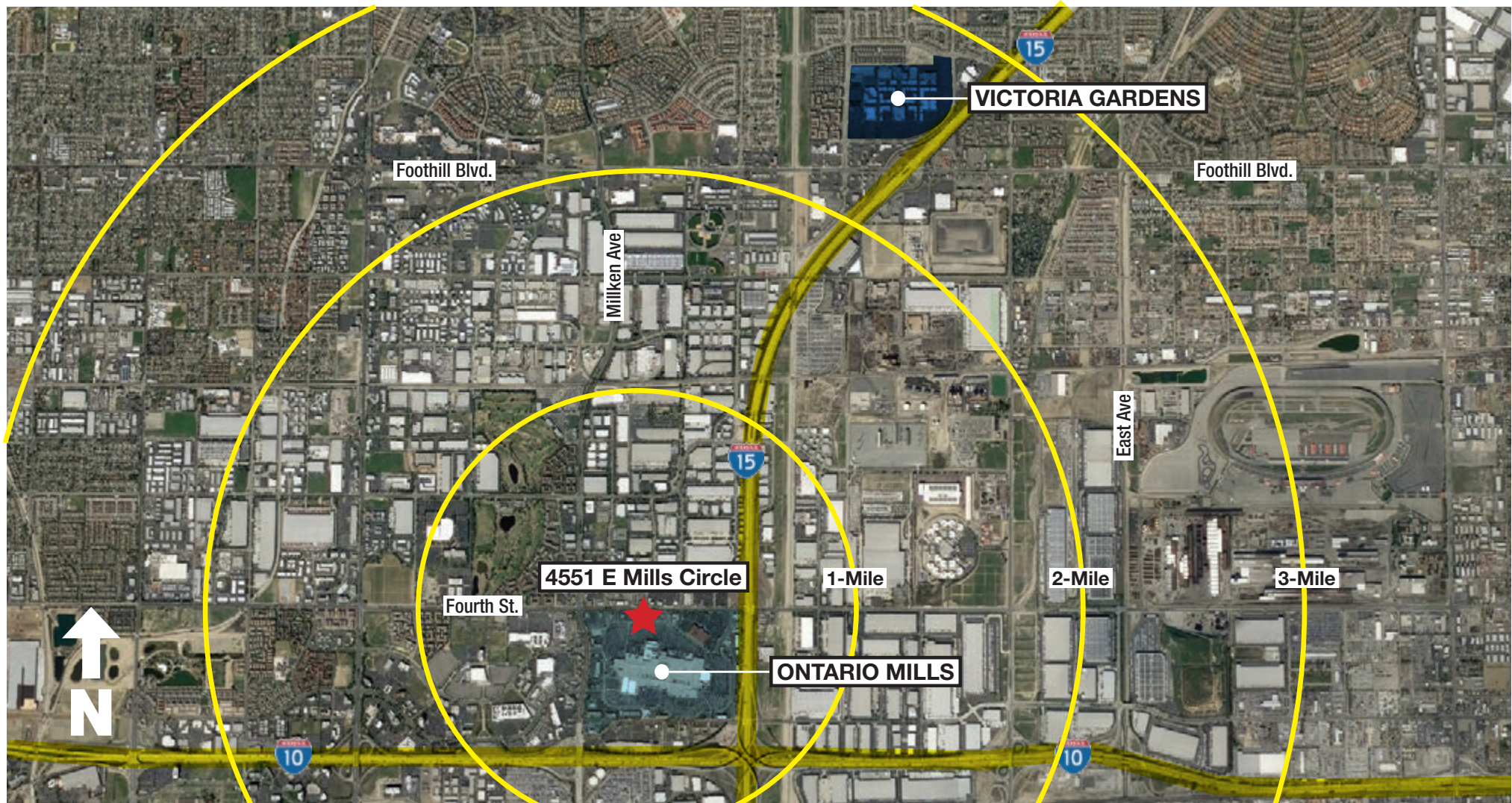
(310) 545-8350 – Office  
(480) 229-4411 – Cell  
[Perry@CalBayCorp.com](mailto:Perry@CalBayCorp.com)



# Ontario Mills Site Available

## REDEVELOPMENT | FOR LEASE

4551 E Mills Circle, Ontario, CA 91764



Project Developer

[www.CalBayCorp.com](http://www.CalBayCorp.com)  
Manhattan Beach, CA

**RYAN SHEA**

(310) 545-8350 – Office  
(310) 963-6614 – Cell  
[Ryan@CalBayCorp.com](mailto:Ryan@CalBayCorp.com)

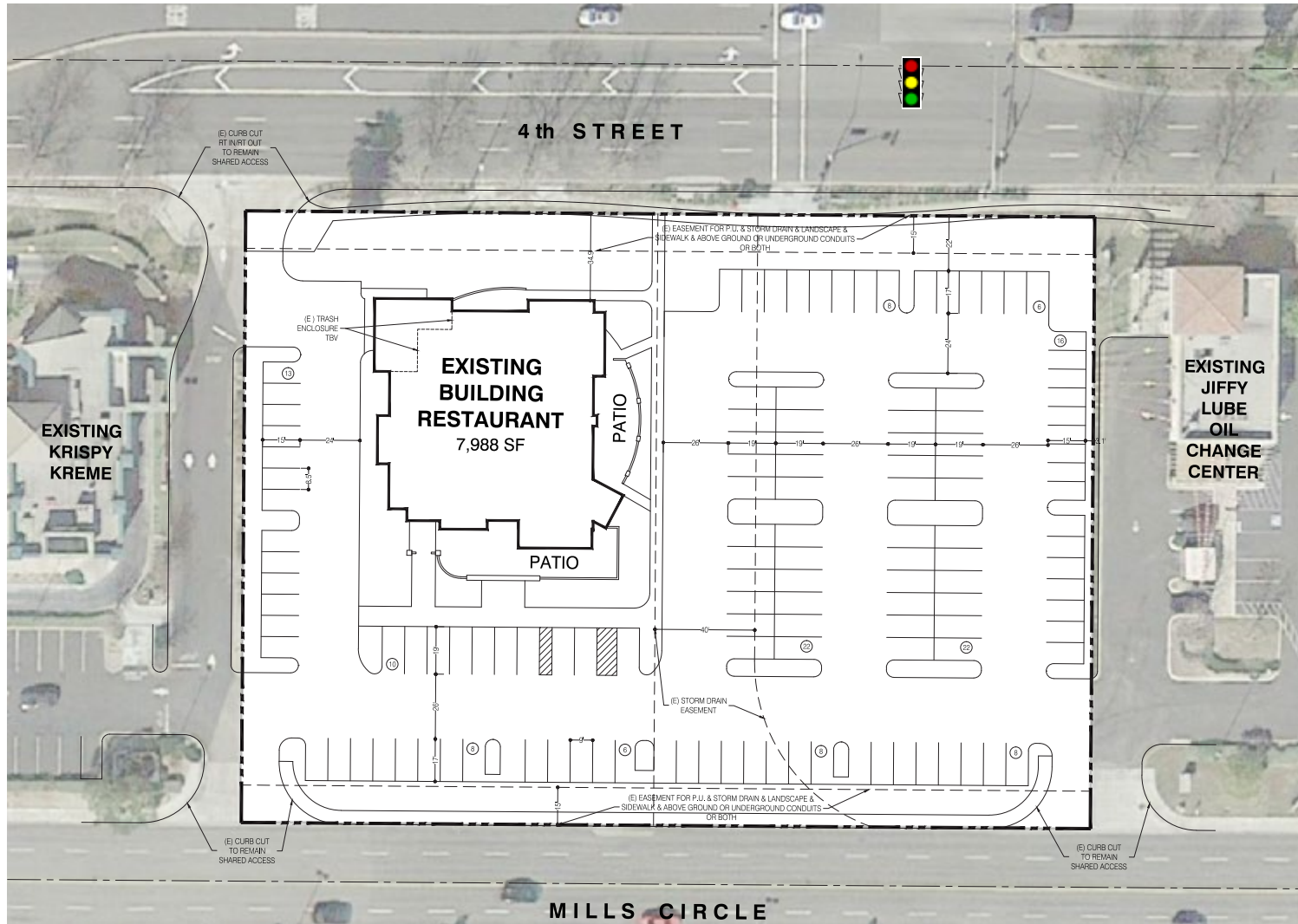
**PERRY MANN**

(310) 545-8350 – Office  
(480) 229-4411 – Cell  
[Perry@CalBayCorp.com](mailto:Perry@CalBayCorp.com)



# Ontario Mills Site Available REDEVELOPMENT | FOR LEASE

4551 E Mills Circle, Ontario, CA 91764



Project Developer

[www.CalBayCorp.com](http://www.CalBayCorp.com)  
Manhattan Beach, CA

**RYAN SHEA**

(310) 545-8350 – Office  
(310) 963-6614 – Cell  
[Ryan@CalBayCorp.com](mailto:Ryan@CalBayCorp.com)

**PERRY MANN**

(310) 545-8350 – Office  
(480) 229-4411 – Cell  
[Perry@CalBayCorp.com](mailto:Perry@CalBayCorp.com)